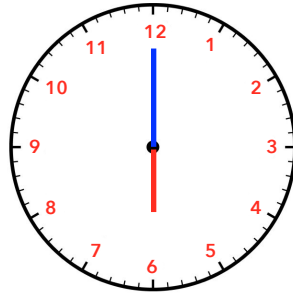


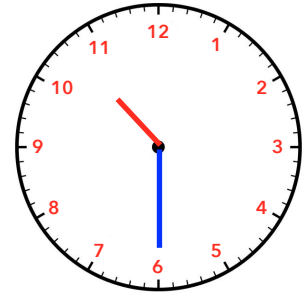
Nous sommes le matin, indique l'heure sous chaque horloge.



___ h ___ min



___ h ___ min

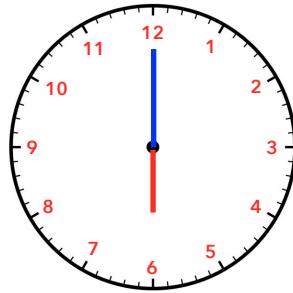


___ h ___ min

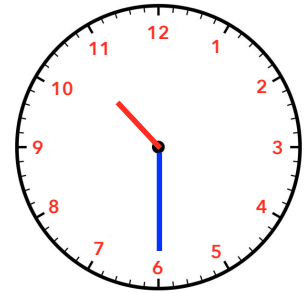
Nous sommes l'après-midi, indique l'heure sous chaque horloge.



___ h ___ min

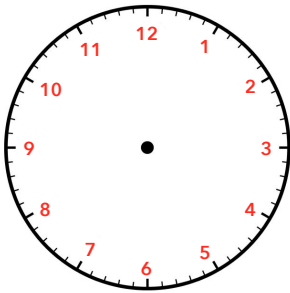


___ h ___ min

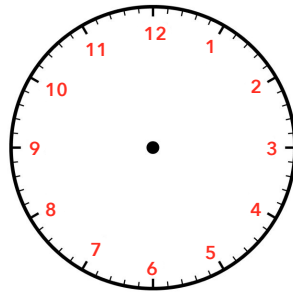


___ h ___ min

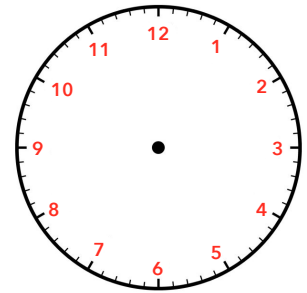
Nous sommes le matin, dessine l'aiguille des heures et celle des minutes sur chaque horloge.



04 h 00 min

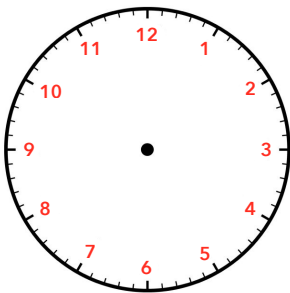


08 h 15 min

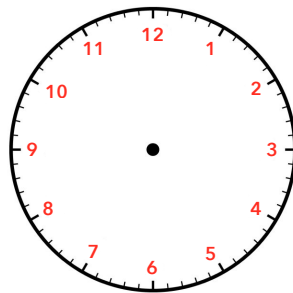


10 h 05 min

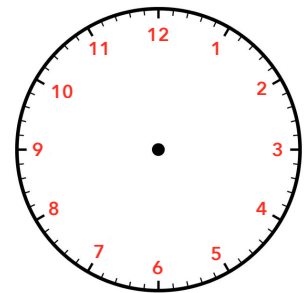
Nous sommes l'après-midi, dessine l'aiguille des heures et celle des minutes sur chaque horloge.



16 h 30 min



20 h 20 min



13 h 10 min