

## Comment lire l'heure

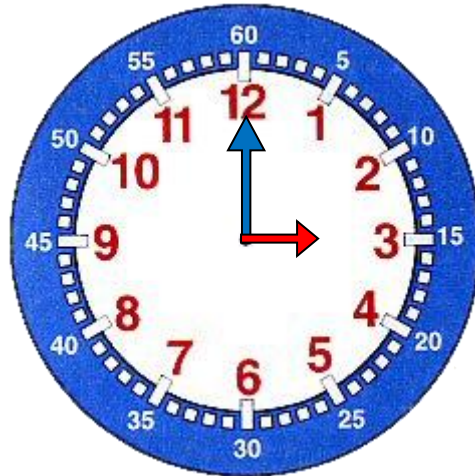
Pour lire l'heure, il suffit de regarder les aiguilles :

La grande aiguille indique les minutes

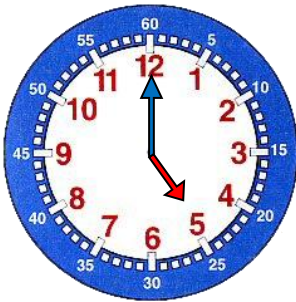
La petite aiguille indique les heures

Les heures sont écrites en rouge

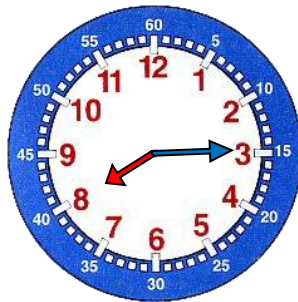
Les minutes sont écrites en blanc



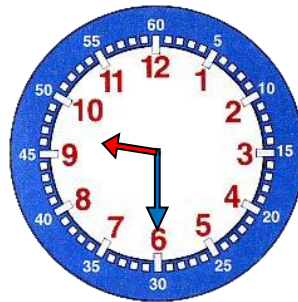
Il est 3 h 00 min



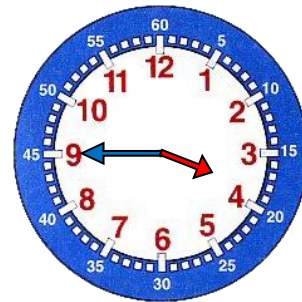
5 h 00 min



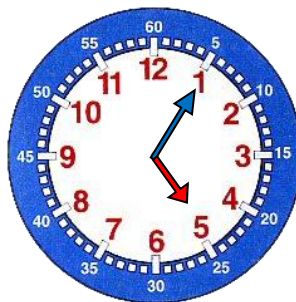
8 h 15 min



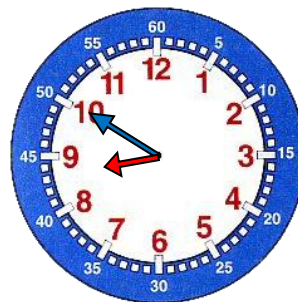
9 h 30 min



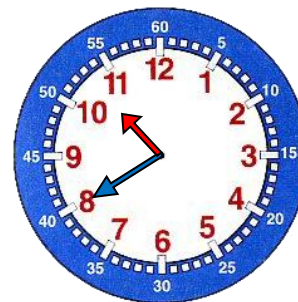
3 h 45 min



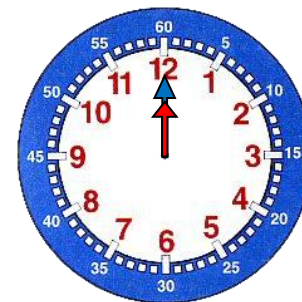
5 h 05 min



8 h 50 min



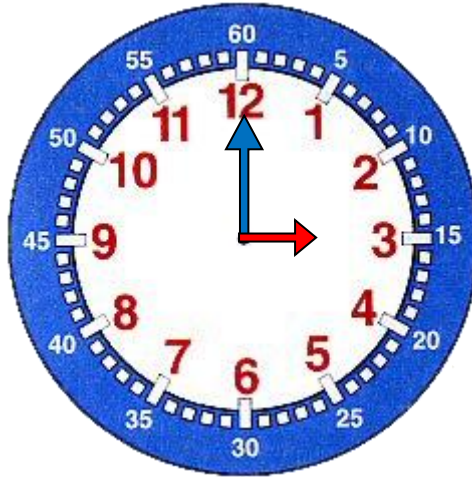
10 h 40 min



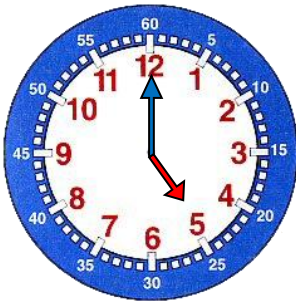
midi

## Comment lire l'heure après midi

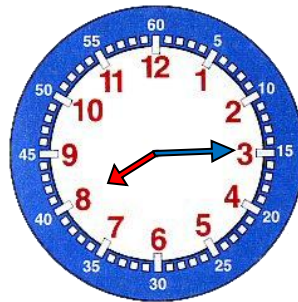
Pour lire l'heure, l'après-midi, on ajoute **12 heures**.



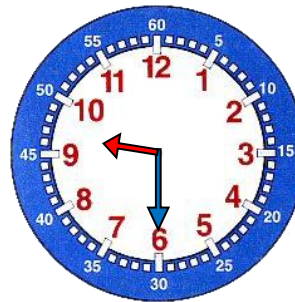
Il est 3 h 00 min +12 = 15 h 00 min



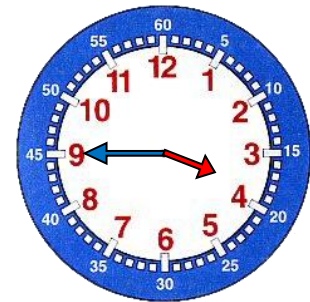
17 h 00 min



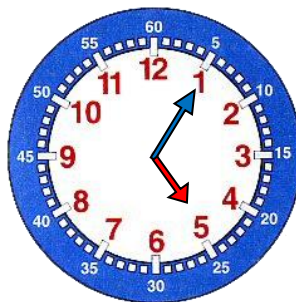
20 h 15 min



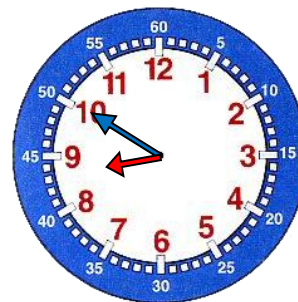
21 h 30 min



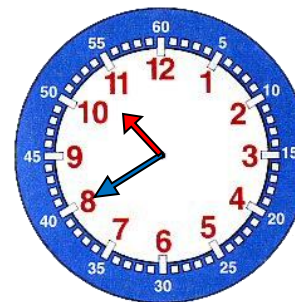
15 h 45 min



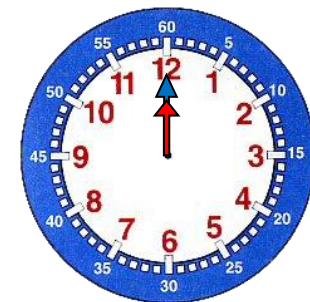
17 h 05 min



20 h 50 min



22 h 40 min



minuit

Trouve l'heure inscrite sur chaque horloge..

